



WARRANTY AND SAFETY GUIDELINES

3-YEAR LIMITED WARRANTY

Products manufactured by Hannay Reels, Inc. ("Hannay") are warrantied for 3 years from date of shipment when properly installed, maintained, and operated in accordance with Hannay instructions. In no event will Hannay have a warranty obligation for normal wear and tear, or for products that have, at Hannay's determination, been subjected to accident, abuse, misapplication, improper installation or improper maintenance. Common examples of normal wear and tear would include paint finish, swivel joint seal wear, and switch or motor brush wear.

Hannay makes no warranties, express or implied, other than those included in this warranty statement, and we disclaim any implied warrant of merchantability or fitness for any particular purpose. Hannay will not be liable for any consequential, incidental, or indirect damages from any cause whatsoever.

Failure to use a flexible inlet connection on any live hose reel will void the swivel joint warranty. Failure to use a properly sized circuit breaker with any electric rewind motor will void the electric motor warranty. Failure to use a filter and lubricator on any air rewind motor will void the air motor warranty. Failure to follow all procedures outlined in the Safety Guidelines document will void the warranty.

Components not manufactured by Hannay will be subject to the original manufacturers' warranties. Examples of such components include:

- Hose and cable
- Motors, speed controls and switches
- Swivel joints and seals
- Slip ring and brush assemblies

Equipment which proves to be defective upon our inspection will be replaced free of charge, including freight to the customer. Our responsibility ceases upon delivery to any common carrier and we do not, unless previously instructed, insure shipments beyond point of delivery to such carrier. No material will be accepted for return without a return goods authorization (RGA). This warranty extends to the replacement or repair of the reel or part (no labor).

Hannay reserves the right to modify or alter materials, dimensions, design, and construction when necessary to improve the performance of the reel and/or accessories, or to meet delivery requirements.

RETURN GOODS POLICY

All Hannay reels are built to order. These orders are typically placed into production within 1 business day of receipt. Once production begins, it may not be possible to cancel the order.

To prevent returns because the wrong reels or parts were ordered, please use the Hannay Reels Spec Worksheet (either online or from our Order Accessory Guide) when specifying reels. Be sure to include any size, weight, pressure and/or material compatibility limitations for the application.

In the event that an item does need to be returned for credit, repair or replacement, prior approval must be obtained from Hannay Reels. Upon your request, we will send a Return Goods Authorization (RGA) form. A signed copy of this form must accompany the material when returned to us, with the RGA number clearly showing on the outside of the box—a label is provided to you that you can print and attach. No product will be accepted for return or credit without an authorized RGA number.

All material must be returned prepaid, unless otherwise noted on our RGA. No return will be accepted that has been damaged due to improper return packaging, tampered with or altered from its original condition. Our restocking and handling fee is a minimum of 25% for standard catalog reels and parts. Custom reels specially built to customer specifications cannot be returned for any reason.

SAFETY GUIDELINES

These guidelines are intended to provide general safety recommendations for using hose and cable reels. Hose and cable reel operators should be sure to follow any additional safety guidelines required by their employer and all OSHA regulations. Always use the proper personal protective equipment (PPE) required for the job to be performed.

It is an employer's responsibility to pass along these safety guidelines to all employees and operators using hose and cable reels. If Hannay Reel products are being sold separately or installed on equipment, it is the seller/installer's responsibility to include these safety guidelines with the sale of the product. Additional copies of these safety guidelines may be obtained from Hannay Reels by request.

Hannay Reels will not assume any liability for damages or injury resulting from any modifications made to a Hannay reel or parts supplied by Hannay Reels, usage other than the product's original intent, or improper operation.

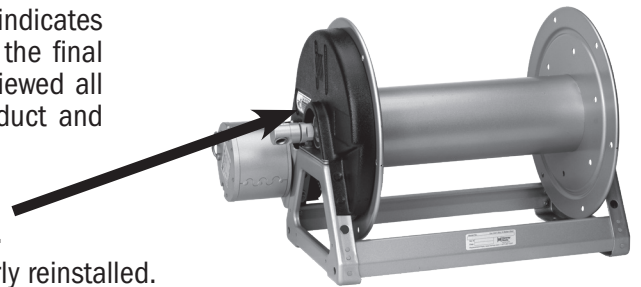
Read all product related manuals, safety instructions and technical service bulletins prior to unpackaging and before use of hose or cable reels. If there are any questions on the safe installation and use of your Hannay reel, contact Hannay Reels directly or visit our website for all reel parts drawings and maintenance and installation guides.

GENERAL CAUTIONS / WARNINGS PINCH POINT AREAS

NOTE: Because equipment can be installed in many different ways, OSHA indicates the appropriate guarding of pinch points is in part the responsibility of the final installer of equipment. During installation, make sure that you have reviewed all safety, maintenance, and installation information provided with the product and take appropriate measures to guard against pinch points.

ALWAYS USE CAUTION WHEN OPERATING NEAR CHAIN AND SPROCKETS.

Chain guards should not be removed except for maintenance, then properly reinstalled.



USE CAUTION WHEN GUIDING HOSE OR CABLE BACK ONTO POWER REELS.

Keep the hand guiding the hose or cable back onto the reel several inches away from the rotating drum so that there is no possibility of trapped or pinched fingers. Use proper personal protection equipment, and avoid loose fitting clothing, jewelry or long hair.

WARNING: Failure to keep hands away from discs when operating reel can lead to serious injury.



BRAKES AND PIN LOCKS

When provided, make sure braking devices and/or pin locks are properly adjusted. Do not operate reel with pin lock brake engaged.

HOSE REEL GUIDELINES

USE A HOSE REEL AND HOSE PROPERLY RATED FOR THE APPLICATION.

Never exceed the working pressure rating (psi) specified for a particular reel, swivel joint, or hose. Also, make sure that the size and material of both the reel and hose are appropriate for the intended use.

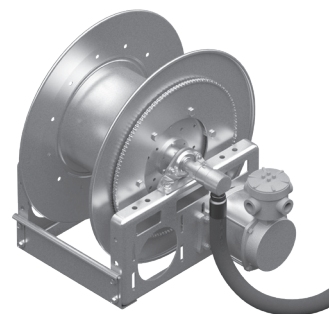
ALWAYS USE A FLEXIBLE CONNECTOR BETWEEN SWIVEL JOINT AND INLET PIPING. A misaligned hard-piped connection can add side load forces that lead to premature failure of the swivel joint and/or other parts of the reel.

TEST FOR POSSIBLE LEAKS AT FLUID CONNECTIONS PRIOR TO PUTTING REEL INTO SERVICE.

DO NOT PRESSURIZE HOSE WHILE HOSE IS WOUND ON DRUM, AS FLUID PRESSURE AND HOSE EXPANSION MAY CAUSE INJURY OR DAMAGE TO REEL.

BEFORE WINDING COLLAPSIBLE HOSE ONTO A LIVE REEL, HOSE MUST BE EVACUATED OF ALL FLUID AND DEPRESSURIZED.

FULLY RELEASE PRESSURE IN HOSE BEFORE REMOVING FITTINGS, HOSE OR PERFORMING ANY MAINTENANCE.



CABLE REEL GUIDELINES

USE A CABLE REEL PROPERLY RATED FOR THE APPLICATION.

Never exceed the voltage and amperage specified for a particular reel or cable. Make sure that the voltage and amperage of the reel is rated for the intended use.

MAKE SURE TO FOLLOW ALL LOCAL/STATE/NATIONAL ELECTRICAL CODES.

ALWAYS DISCONNECT POWER SOURCE PRIOR TO INSTALLATION, PERFORMING MAINTENANCE, OR BEFORE REMOVING JUNCTION BOX COVERS OR COLLECTOR RING HOUSINGS.

LIQUID-TIGHT CONNECTIONS SHOULD BE USED AT ALL TIMES.

If you are unsure about electrical requirements, consult a qualified electrician.



SPRING REWIND REELS

ALWAYS USE CAUTION WHEN SPRING REEL RATCHET ASSEMBLY LOCK IS DISENGAGED.

WARNING: When disengaging the ratchet lock, always hold onto the hose or cable and guide it onto the reel as it rewinds.

NEVER LET GO OF HOSE OR CABLE. Hose or cable end must be walked back to the reel on all spring reels when rewinding. If allowed to freely rewind, personal injury or damage to reel could occur.

NEVER REMOVE THE COVER CONTAINING THE SPRING. Coiled springs are under tension and removal of cover can result in severe personal injury. Damaged spring motors should always be replaced.



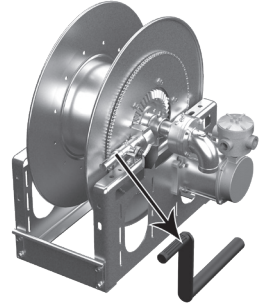
HOSE OR CABLE BALL STOPS. Except for 'constant tension' applications where the end of the hose or cable is tethered or otherwise secured, it is recommended that a ball stop, properly sized so the stop is larger than the roller assembly opening, be used in conjunction with your Hannay reel.

Having a properly installed ball stop on the reel can help prevent damage to a nozzle, fitting, connector or tool that is installed on the end of the hose or cable. However, please note that having a ball stop installed on a reel does not negate the requirement to always walk the hose or cable back to the reel in a controlled way.

Refer to Hannay Tech Service Bulletin (TSB) 2013.07.005: Installing Hose or Cable on a Hannay Spring Retractable Reel for information on proper placement of the ball stop on the hose or cable.

POWER REWIND REELS

ALWAYS DISCONNECT POWER SOURCE PRIOR TO INSTALLATION OR PERFORMING MAINTENANCE ON ANY POWER REWIND REEL. BE SURE TO TAKE ANY REMOVABLE CRANK REWIND HANDLE OFF REEL BEFORE USING ANY POWER REWIND REEL.



ELECTRIC REWIND REELS

WARNING: BEFORE WIRING ANY MOTOR, VERIFY THE MOTOR VOLTAGE LISTED ON THE MOTOR TAG MATCHES THE SUPPLY VOLTAGE. BE SURE TO FOLLOW ALL LOCAL/STATE/NATIONAL ELECTRICAL CODES.

USE CIRCUIT BREAKERS FOR ELECTRIC REWIND MOTORS. All electric rewind reels manufactured by Hannay Reels require a properly sized circuit breaker to protect the motor from a sustained overload condition. Type 3 manual reset circuit breakers are recommended for all Hannay motor applications.

CHECK ALL ELECTRICAL CONNECTIONS FOR PROPER INSTALLATION PRIOR TO USE. For more information refer to Hannay Tech Service Bulletin (TSB) 2013.08.006: Installation Instructions for Electric Rewind Reels.

If you are unsure about electrical requirements, consult a qualified electrician.

PNEUMATIC REWIND REELS

ALWAYS DEPRESSURIZE THE PNEUMATIC POWER SYSTEM BEFORE INSTALLATION OR MAINTENANCE.

ALWAYS USE A FILTER REGULATOR AND LUBRICATOR

CHECK ALL CONNECTIONS FOR PROPER INSTALLATION PRIOR TO USE. For more information refer to Hannay Tech Service Bulletin (TSB) 2013.08.003: Installation Instructions for Compressed Air Rewind Reels.

DO NOT EXCEED MAXIMUM PRESSURE FOR PNEUMATIC MOTORS.

HYDRAULIC REWIND REELS

ALWAYS DEPRESSURIZE THE HYDRAULIC POWER SYSTEM BEFORE INSTALLATION OR MAINTENANCE.

CHECK ALL HYDRAULIC CONNECTIONS FOR PROPER INSTALLATION PRIOR TO USE. For more information refer to Hannay Tech Service Bulletin (TSB) 2013.07.002: Installation Instructions for Hydraulic Rewind Reels.

DO NOT EXCEED MAXIMUM PRESSURE FOR HYDRAULIC MOTORS.

CALIFORNIA PROP 65

CA Proposition 65 requires manufacturers and distributors to provide clear product warnings about exposures to chemicals that can cause cancer and/or reproductive harm. By requiring that this information be provided, Proposition 65 enables Californians to make informed decisions about their exposures to these chemicals. Hannay Reels supplies a Prop 65 warning label inside the warranty envelope that is included with every reel shipped. Because every installation is different, responsibility for determining where to affix the warning label on the reel for maximum visibility lies with the installer of the reel. If labels are missing, or if additional labels are required, you may call customer service at (518) 797-3791 or e-mail sales@hannay.com with that request.

For more information on CA Prop 65 visit: www.p65warnings.ca.gov

ESPAÑOL

Directrices de seguridad de Hannay Reels están disponibles en español en la sección de soporte de nuestro sitio web. Visite: www.hannay.com/en-US/support/maintenance-and-installation-guides/



Hannay Reels®

553 State Route 143, Westerlo NY 12193 USA
518-797-3791 • reels@hannay.com
www.hannay.com